



PRESS KIT

Lalandia in Søndervig 2022



Introduction

In June 2022, the third Lalandia – Lalandia in Søndervig – will open.

Lalandia in Søndervig offers families with children the opportunity to enjoy the best of two worlds: the beautiful landscape of the North Sea coast and wonderful indoor experiences for young and old.

Lalandia is regularly contacted by the press, and so we have produced this press kit in order to make everything you need to know about Lalandia as accessible as possible. If you require further information, our press contact Thomas Bahn Jespersen is happy to assist. His contact details can be found on the final page.

Please note that there is also a separate press kit for Lalandia in Billund and Lalandia in Rødby.

Kind regards,
Lalandia

The Lalandia Aquadome™	3
Monky Tonky Land	3
The Lalandia Centre	3
A green tropical holiday centre.....	3
The holiday homes	4
Facts	5
Contact information	6



THE LALANDIA AQUADOME™

The water in the tropical waterpark is 28°C and the air is 30°C. The Aquadome consists of different types of pools and jacuzzis, and also houses a large number of water slides, including the gigantic Tornado. The Wave Surf attraction enables children and adults to try their hand at surfing, helped along by our surfing instructors. There is also a water playground featuring water slides, a huge tipping bucket, lookout tower and water fountains. The youngest bathing guests have their own area in the Aquadome, with baby-friendly and warm water pools, as well as activities for guests aged 0-5 years. There is also a sauna and hot pools – for example, a large panoramic sauna overlooking the Aquadome. The large outdoor hot pool with massage nozzles is open throughout the year.

MONKY TONKY LAND

Monky Tonky Land consists of a jungle gym, slides, ball pitches, trampolines, etc. For the youngest children, a special area has been set up where they can play in a safe environment. Every week there are alternating activities in the creative workshop in the playland. There is also seating for parents.

THE LALANDIA CENTRE

The theme of the Lalandia Centre reflects the external surroundings, with decor that brings to mind the landscape of the west coast of Denmark, with its dunes and beautiful scenery. The Lalandia Centre is also home to restaurants, activities and shopping opportunities for the whole family.

A GREEN TROPICAL HOLIDAY CENTRE

Lalandia in Søndervig has a climate-friendly energy supply thanks to solar cells on the roof and electricity from Danish wind turbines. The heating comes from a large water pipe that runs past Lalandia. The roof is covered with sedum.





THE HOLIDAY HOMES

Lalandia in Søndervig rents out 464 holiday homes.

The holiday homes are furnished with a dining area, sofa and chairs, TV, kitchen with fridge, cooker/hot plates and oven. The holiday homes have one or more terraces. All beds come with duvets and pillows, and bed linen can be brought along or rented. All the holiday homes have a parking space.

Individual requests and requirements, such as holiday homes equipped for disabled visitors and pet-free holiday homes, can be catered for.

All the holiday homes at Lalandia are non-smoking and come with free WiFi.

Residential guests at Lalandia have free entry to the Aquadome™ and free final cleaning.



FACTS

THE AQUADOME™

Size	8,000 m ²
Capacity	1,600 visitors
Water temperature	28 degrees
Air temperature	30 degrees

Water slides:

Tornado, Wave Surf, Beach Racers, Single Tube, Double Tube.

Pools:

Wave pool, children's pool, hot pools, large water playground: Aquasplash Playground, outdoor hot pool.

Other:

Changing areas, saunas, seating and relaxing areas and food outlets.

MONKY TONKY LAND

A play area for the very youngest, trampolines, slides, ball pitches, a mini go-kart track and creative workshop.

INDOOR ACTIVITIES

Sky Rider, High Jump trampolines, Click and go high climbing area, padel tennis, shuffleboard, and Little Vegas

RESTAURANTS, CAFÉS AND BARS

Værftet – Mad & Spisehus, Restaurant Bone's, Sports Bar, Espresso House, Waffle & Icecream, Sports Corner, Surfclub Food Court.

SHOPS AND OTHER AMENITIES

Minimarket, Aquadome Shop, Monky Tonky Factory and Lalandia Service Centre.

HOLIDAY HOMES

Number of holiday homes:	464
Capacity:	3,000 overnight guests.

Home type	Number of people
-----------	------------------

Active 4 (48 m ²)	4 + 1 child 0-2 years
Active Plus 4 (55 m ²)	4 + 1 child 0-2 years
Modern 6 (73 m ²)	6 + 1 child 0-2 years
Active 6 (100 m ²)	6 + 1 child 0-2 years
Premium 6 (86 m ²)	6 + 1 child 0-2 years
Modern 8 (101 m ²)	8 + 2 children 0-2 years
Premium 8 (110 m ²)	8 + 2 children 0-2 years

OWNERSHIP

Lalandia Søndervig A/S is owned by PARKEN Sport & Entertainment A/S (75%) and by a local investor, Keld Hansen (25%).

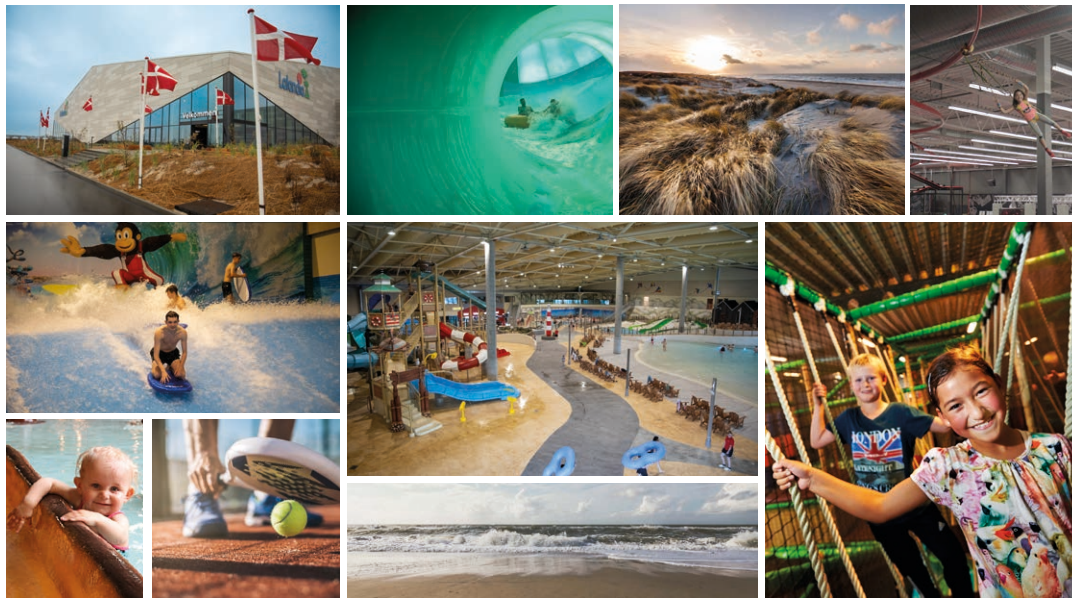


CONTACT INFORMATION

Lalandia in Søndervig · Havstien/Fjordstien · 6950 Ringkøbing · Telephone +45 8830 6505
www.lalandia.dk · lalandia@lalandia.dk

Press contact:

Thomas Bahn Jespersen, Director of Sales and Marketing
tbj@lalandia.dk · Mobile +45 2371 3526



MANAGEMENT AND ORGANISATION

Jan Harrit, Managing Director
jh@lalandia.dk · Telephone +45 7614 9420 · Mobile +45 2447 5950

Thomas Bahn Jespersen, Director of Sales and Marketing
tbj@lalandia.dk · Mobile +45 2371 3526

